

Online Gallery for
Camberwell Art Show

2



Glenferrie Shop Fronts

4

Glenferrie
Placemaking Survey,
open until **11 September.**
Page 3 for more info...

THE GLENFERRIE TIMES

Vol. 2, edn. 36

An independent paper for the locals and traders of Glenferrie.

September/October 2020

2020 Council Elections

Victorian local council elections will be held during October 2020. This year's council elections will be conducted by post across Victoria. Ballot packs will be posted to voters between 6-8 October. The Victorian Electoral Commission (VEC) must receive completed votes by mail or hand-delivered to election offices by 6pm, Friday 23 October.

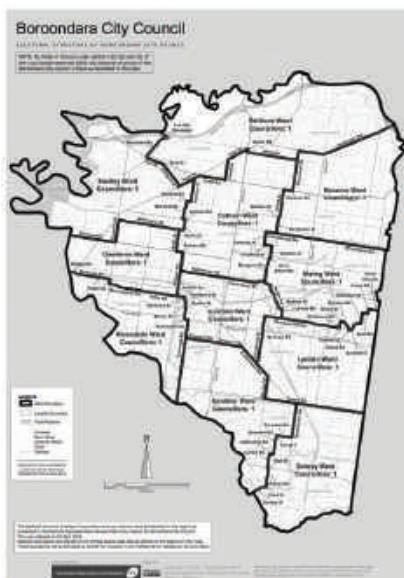
For the City of Boroondara, there will be a new 11-ward, single councillor structure replacing the current 10-ward, single councillor structure.

The additional 11th ward is the Riverdale Ward, located in the south-west of the City of Boroondara and shares a boundary with the Glenferrie, Junction and Gardiner Wards. To accommodate this new ward, boundary realignments have occurred across the council

(see map).

Before the City of Boroondara was created, Glenferrie Hawthorn was located in the Municipality of Hawthorn or City of Hawthorn established in 1860. The Municipality of Hawthorn was divided into four wards in 1891 including Auburn, Glenferrie, Power and Yarra. In 1994 Hawthorn merged with the Kew and Camberwell municipalities to become the City of Boroondara.

Continues on page 2....



City of Boroondara's 11-wards. Source: VEC

Climate Action Plan

On 14 August 2020, the City of Boroondara commenced the first phase of community



Climate action poster on local Glenferrie residence.

consultation to develop a Climate Action Plan. An online community survey is open until **14 September** to all who live, work, study or visit Boroondara. The survey is designed to

identify the expectations, priorities, support, and ideas for climate action within the community, and gain insight into existing sustainable practices and efforts in local households.

Continues on page 3....

Springtime Wattles

September 1st marked the first day of spring in Australia and is also the celebration of Wattle Day. The wattle (acacia) is a flowering shrub-like plant with approximately 1350 different species throughout the world and has been in Australia for over 35 million years. LE Bray Reserve in Glenferrie Hawthorn is home to a few varieties of wattles. Some beautiful displays of wattles can also be spotted in residential gardens in the area.

The golden wattle, commonly found throughout Victoria and featured on the Commonwealth Coat of Arms, is the insignia of the Order of Australia. The colour of the foliage and flowers, green and gold, are usually worn by Australian sportspeople who represent the country internationally. In 1988, Australia's bicentenary, the golden wattle was officially proclaimed the national floral emblem.

Prior to the official proclamation, the wattle was widely accepted as a national symbol and,



Earleaf acacia or black wattle found at LE Bray Reserve.

in 1901, became the unofficial national floral emblem to mark Federation. The first Wattle Day was celebrated in 1910 in NSW, Victoria and South Australia. However, it was not until 1992 that September 1st was formally declared National Wattle Day.

Continues on page 3....

Mr. Fox

You think that you would be more likely to find a fox out in the country, but there are fox families found in every major city in Australia, including Melbourne and our very own Glenferrie.

The red fox was introduced to Australia in the 1850s, brought to Werribee by the Chirnside family for hunting. They are very adaptable animals and have now migrated to over two thirds of the country. Foxes love urban areas such as Hawthorn where they can burrow their dens under houses and in thick vegetation along the Yarra and have access to a constant supply of food - especially on bin night.

Foxes are territorial animals. Each fox territory spans over six hectares and will generally contain one male and one female fox (vixen) who can tolerate each other outside of breeding season. In Melbourne, there are around 3-16 foxes per square kilometre.



Red fox near Quest, 616 Glenferrie Road. Source: Facebook post by S. Owen

While foxes prefer to come out at night, they are not exclusively nocturnal, and you are likely to see them out during the day more often this time of year.

Continues on page 2....

The Glenferrie Times is an independent publication for the traders, residents and visitors to the Glenferrie precinct in Hawthorn. It is produced by a small team of Glenferrie locals who are dedicated to nurturing the community and providing a forum for the betterment of the area. We hope to provide the people of Glenferrie with a relevant and informative publication.

Editor
Leon Pezzimenti

Sub-Editor
Antonia Fleming

Writers
Kayley Langdon
Ivy Trim

Photographs
Kayley Langdon
Ivy Trim

Printed at Triangle Office
Printing Services

CONTACT

817B Glenferrie Road
Hawthorn 3122, VIC

(03) 9819 4371
sustainable.glenferrie.traders@gmail.com

www.theglenferrie
times.com

www.facebook.com/
TheGlenferrieTimes

The Glenferrie Times encourages feedback from the community.

PROFILES

If you wish to have your business profiled in The Glenferrie Times, please contact us at 9819 4371. We will do our best to publish your profile.

Printed: 2 September 2020

2020 Council Elections

...continued from page 1

On 19 August 2020 the Minister for Local Government announced elections would proceed as planned, despite calls to postpone the local elections this year due to the COVID-19 pandemic restrictions limiting campaigning opportunities such as door-knocking, events and other in-person strategies. The postal voting system across the state will ensure the safety of all voters during the pandemic.

There are two types of voters for the local council elections: state-enrolled voters and council-enrolled voters. Voting is compulsory for state-enrolled voters who are Australian citizens registered on the electoral roll at their main living address. Council-enrolled voters are those that

pay rates for a property in a council area they do not reside in; are not an Australian citizen and pay rates for a property and reside in that property; or are a director or company secretary of a corporation that pays rates and do not live in that council area. If a council-enrolled voter has more than one property in a council, they are only entitled to one vote per council.

Council-enrolled voting is not compulsory for the October 2020 elections (except for City of Melbourne) but with the introduction of the Local Government Act 2020, council-enrolled voting will become mandatory for the October 2024 election. Eligible voters must be enrolled by 4pm, 28 August 2020. If required, requests for mail redirection of ballot packs must be

submitted to VEC by 5pm, 17 September, go to vec.vic.gov.au/enrolment for details.

Nominations to become a candidate for your council open on 17 September, close on 22 September at 12 noon and lodgement of candidate statements, photos and questionnaires must be in by 23 September at 12 noon. In order to become a candidate one must be on the state or council voters roll for the council they are wishing to stand. Candidates are able to stand for election in any ward within their council no matter which ward their enrolment address is in.

For more information visit vec.vic.gov.au and follow theglenferrietimes.com for updates on the Glenferrie Ward candidates.

Online Gallery For Camberwell Art Show



Painting by Elizabeth Cogley.

Commencing in August and running for four months, the 2020 Camberwell Art Show has been re-imagined as a free online gallery in light of COVID-19 restrictions. The annual art show is typically held in the Glenferrie Hawthorn precinct from late June to early July.

The Camberwell Art Show is organised by the Camberwell Rotary Club to promote and encourage the artist community and raise funds for the rotary club's

local, regional and international projects. The art show began in 1966 and since 2013 has been held at Swinburne University and is an event enjoyed locally.

With large gatherings restricted due to the pandemic, the rotary club has adapted and created an online art gallery where featured artworks can be viewed and purchased. Unlike the usual week-long art show, this art gallery is online from August until November. Each month will feature approximately 100 paintings and monthly themes with all artists chosen and invited to exhibit their work by the Camberwell Art Show Committee.

The August gallery featured the art show's 'Ten Best Artists'; September is the 'Showcase Art Gallery'; October will display

the best of Cheltenham's 'Without Pier Gallery'; and November will feature the best of 'Boroondara Artists'. The November 'Boroondara Artists' will be the only judged show and the winner will receive an exhibition of their own to be held at the Hawthorn Arts Centre in 2021.

The online gallery can be viewed and artwork is available for purchase at camberwellartshow.org.au. Viewers are also invited to enter the 'Viewers' Choice Award' to win a \$500 cash prize by voting on a favourite painting each month. The committee hopes the Camberwell Art Show can return to its usual format in full force next year, but until then the online gallery will be sure to spark joy for many from the comfort of home.

Mr. Fox

...continued from page 1

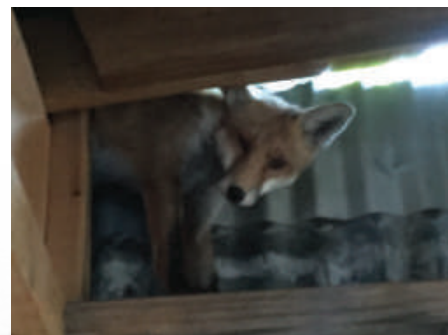
Though the fox spends most of the year a solitary hunter, foxes come together for their breeding season from July to October. A vixen will have 4-10 pups who are weaned after 4-5 weeks.

When she is nursing her pups, a vixen hunts for food more often to bolster her diet, increasing her food intake by about a third. Foxes are a very social family pack animal and are very playful with their pups, much like dogs. But as their social calendar revolves around the breeding season, the pups will disperse from their parents after October, and the fox becomes a 'lone wolf' once again.

The pups can roam up to 30km to find a vacant spot in an established territory.

The fox's favourite foods include mice, rats, insects, fruit, and food waste where they can get it. Foxes have been known to hop into people's backyards and dine on pet rabbits and chickens. As an introduced species, they have no natural predators and instead prey on a lot of native species, which has caused the extinction of many ground-dwelling animals since the fox first moved to Australia.

Foxes are very wiley and wary of humans, but we have been seeing them out and about in Glenferrie more and more often



Red fox spotted in a shed near 817 Glenferrie Road.

this breeding season. With most of the humans indoors at the moment, the night belongs to the fox.

Thank you to Brett Lane, Managing Director of Nature Advisory at 61-63 Camberwell Road, Hawthorn East for his red fox insights.

Climate Action Plan

...continued from page 1

Council committed to develop a Climate Action Plan in December 2019. The Plan will replace the current 'Our Low Carbon Future Strategy' adopted in 2009, which will end in 2020. This strategy set a target for council to reduce its corporate greenhouse gas emissions by 30-40% and help reduce community emissions by at least 50,000 tonnes CO₂-e by 2020. As of 4 May 2020, council committed to a decade-long power purchase agreement to reduce greenhouse gas emissions in Boroondara by over 70% compared to a decade ago. As a result, Boroondara's street lights (more than 11,000) and 16 major council buildings now run on local renewable energy supplied by a wind farm in Gippsland, and will until at least 2030. This means that over 80% of council's total electricity is now operating on renewable energy. The City of Boroondara is expected to complete its carbon emissions report for the 2019-2020 financial year in November 2020 to confirm they have met their reduction target.

The 2020-21 council budget outlines

a \$4.04 million commitment to "a range of environmental initiatives" to minimise council's 'environmental footprint'. This includes \$985,000 toward reducing greenhouse gas emissions and community engagement to develop a Climate Action Plan which will "define many of the improvements Council will make in climate/environmental strategies".

Local climate activist group Lighter Footprints believes that while council has taken some good steps in the name of sustainability, particularly the renewable purchase agreement, climate action needs to be a top proactive priority. "There is so much more that could be done and that other councils are doing," said Carolyn Ingvarson, convenor at Lighter Footprints. This includes declaring a climate emergency, adapting our urban environment, reducing local car dependency, supporting and breaking down barriers for businesses and residents to transition toward sustainability, and "making carbon reduction the priority in all council activities". Lighter Footprints hopes that community consultation will foster "meaningful

discussion" to create a holistic Climate Action Plan that will not only "encompass all of the council's own activities" but also involve "a strategy to enable and inspire residents and businesses to take their own actions".

When the first stage of community consultation is completed, council will commence 'feedback consolidation' from 15 September 2020 until the end of October. Council currently plans to commence phase 2 in November until December, which will involve checking in with community to ensure council has understood their concerns, ideas, and priorities. You can have your say about council's role in climate action in Boroondara by completing the community survey before **14 September 2020** and/or access more information by heading to boroondara.vic.gov.au/waste-environment/sustainability/climate-action-plan

Springtime Wattles

...continued from page 1

The wattle, with close to 1000 species in Australia alone, is symbolic of Australia's diversity, resilience and unity. According to the Wattle Day Association the wattle illustrates that "we are one and we are many". Wattle Day on September 1st has been suggested as an alternative date for Australia Day, as the celebration of the wattle is inclusive and representative of Australia's history and future.

Although Wattle Day celebrations did not go ahead as usual this year due to the COVID-19 pandemic, the Wattle Day Association suggested other



Acacia dealbata or silver wattle found LE Bray Reserve. ways to celebrate. Wear a sprig of wattle or the colour yellow, greet one another with a 'Happy Wattle Day', go for a walk and enjoy the wattles in bloom or sing a wattle song with the children in your life.

2020-21 Boroondara Budget Update

At a special meeting of council on 20 July 2020, the City of Boroondara adopted its budget for the 2020-21 financial year.

Council presented its proposed 2020-21 budget on 1 June and accepted community feedback for one month. The proposed budget received 92 submissions from the local community, a significant increase from previous years. In contrast, the proposed 2019-20 council budget received 24 submissions, the 2018-19 budget received 21, and the year before that saw only 7 responses.

Submissions about the current budget predominately included feedback regarding: infrastructure, especially road and footpath maintenance, cycling, and community spaces and amenities; environmental issues and initiatives, including FOGO and the Climate Action Plan; lack of support for the disadvantaged, especially the elderly and homeless; the council rate

increase; and general issues relating to COVID-19.

The redrafted 2020-21 budget adopted on 20 July included no changes based on any of the public submissions. The most significant changes that were made included a decrease of \$1.84 million in total budgeted revenue and an increase in the deficit from \$5.43 million to \$7.39 million. The City of Boroondara explained that the increased deficit was a result of changes made by the federal government to its Financial Assistance Grant to Local Government, impacting council revenue streams for all councils in Australia. In June, after the City of Boroondara had proposed its 2020-21 budget but before the final budget was adopted, the government decided that half of the annual grant (\$2.43 million) was to be allocated into councils' budgets for the previous year. This resulted in a \$1.96 million increase in the surplus for the

Glenferrie Placemaking Survey

On 24 August 2020, the City of Boroondara released its 'Place Vision' for Glenferrie as part of the Glenferrie Road Placemaking Project. The Place Vision summarises the data and ideas raised in Council's community consultation and research compiled since earlier this year. Anchoring the document is a statement that captures Glenferrie's vision. The document then explores the opportunities for improving the Glenferrie precinct.

Since the release of the Place Vision, City of Boroondara has sought community feedback on prioritising improvements along Glenferrie Road and around Glenferrie Station, additional recreational facilities and enhancements around the Hawthorn Arts Centre.

The confirmation of priorities by the community will help to guide Council as they prepare the Glenferrie 'Place Plan' (Stage 4). This plan is scheduled to be released in March 2021, and will outline specific projects and initiatives that will help to achieve the vision and revitalisation of Glenferrie Hawthorn.

The survey regarding Glenferrie vision and priorities is open from 24 August 2020 until 5pm, **11 September 2020**. The Place Vision and survey can be accessed by heading to the 'Glenferrie Road Placemaking Project' page on the City of Boroondara website.

2019-20 council budget, and a corresponding increase in the deficit for the 2020-21 budget.

This year's abnormally high deficit, council explained, is the result of significant costs and loss of council income as a consequence of COVID-19. This includes million-dollar losses in fees and charges, closure of community facilities (such as HALC), and providing community services and assistance to cope with the pandemic (such as the \$4.5 million support and relief package).

Glenferrie Shop Fronts

A shop front aims to attract, engage and entice. They are the interface between the business and the community. Shop fronts reflect the vibrancy of a street.

Between Glenferrie and Burwood Roads there is over 1.5km of main road with shop fronts interspersed with office buildings, pubs, churches, a university, arts centre and petrol stations.

Prior to the COVID-19 pandemic and subsequent

restrictions and orders to stay at home, some shop front businesses were struggling and closing, generally citing online shopping and high rents. However, the pandemic related restrictions have accelerated the decline of some businesses. With a bleak economic outlook for Victoria, a few shops at the end of their lease have taken the opportunity to vacate Glenferrie Hawthorn. The tally of vacant shops is mounting.

A flourishing local economy is core to a vibrant community. Passionate local community member and former Mayor of the City of Hawthorn Jane Nathan explains that empty shops reflect “silenced stories [and] leaves the onlooker without an enlightened spirit, without hope.”

As residents emerge from Melbourne’s stage 4 lockdown, businesses

that remain in Glenferrie Hawthorn should continue to inspire and invite with fabulous and welcoming shop fronts. The community are urged to continue supporting these businesses and shop local. As for those empty shops, which are an opportunity waiting to be snapped up as our economy rebuilds, we call on their owners to get on board with livening up and transforming these blank canvases into a showcase of our connected local community.

Vacant shops could tell stories by our local school children, cross-promote local businesses, display artwork, quotes that make us smile, or feature spring flowers. Shops full of interest and quirk will ‘activate’ the spaces and bring our community out to see, look and talk – the street will be alive and vibrant.



Empty shop located at 696 Glenferrie Road.



Two empty shops at 757 and 759 Glenferrie Road.

Property owners with vacant shops can get in touch with The Glenferrie Times to take part (at no or minimal cost) in awakening your commercial space. We will arrange activation of your shop front.

As Jane explains “Let’s use the empty window spaces and vacant footpaths to help us not only lift our spirits, but also fill them with ideas to invigorate our future.”

We can each play our part - residents, visitors, businesses and property owners.

COMMUNITY MEMBER IN THE SPOTLIGHT

Senator Raff Ciccone

Balancing his time between Canberra and Hawthorn, Senator Raff Ciccone feels most passionate about all things local. Raff has always lived and worked in Melbourne’s eastern suburbs. He grew up in Oakleigh, where he attended his local Catholic primary school and then Salesian College in Chadstone. After graduating high school in 2001, Raff studied at both Deakin and Melbourne University and completed a Bachelor of Commerce and a Bachelor of Arts. It was around this time Raff joined the Australian Labor Party (ALP) and began working as a research officer for former senator the Hon Jacinta Collins while studying.

After graduating from university in 2008, Raff began working in the financial planning industry. He then moved into industrial relations and employment law as an industrial officer for the Shop, Distributive and Allied Employees’ Association (SDA), the largest trade union in the private sector, to advocate for retail workers.

Raff has been a



member of the ALP for 20 years now. He was serving as vice president of the Victorian branch when a vacancy opened in the Senate and he was encouraged to run for the position. Raff became the 100th Senator to represent Victoria when he was appointed to the Senate in March 2019.

While his job involves politics at a national level, Raff said that “a lot of decisions come from feedback we receive from local community groups and individuals in the local community.” The best part of being a senator, for Raff, is “being able to meet different people and helping out with their issues” in navigating systems related to the federal government including immigration, Centrelink, and the NDIS. Sometimes, struggling locals visit his office seeking assistance to locate

accommodation and welfare services. “The ability to help people is really profound,” said Raff. “To represent people in Parliament is a huge privilege.”

Depending on the sitting schedule, Raff spends roughly half his year in Canberra and the other half at home attending to domestic duties. However, after the scheduled parliamentary sitting in early August was cancelled due to COVID-19, Raff opted to participate in the next fortnight’s sitting remotely via teleconference from his electorate office in Melbourne. With the stress of the pandemic, especially working in Federal Government, it is important for Raff to maintain his mental health - whether that means escaping work with a good book, watching Collingwood play (when they’re winning, that is), exercising, or catching up with loved ones “even if it’s virtually now”. “Family is a big part of my life, especially being from an Italian background,” he said.

When Raff bought a home in Hawthorn some years ago now, it was the perfect middle ground between his work in the city and his electoral office in Box Hill. He sees incredible value in the local area from its “wonderful parklands”,

restaurants, cafes, services and amenities such as access to public transport. He makes the most of the many parks in the area with his dog Bismarc, often walking along the Yarra trail.

When he is in Hawthorn, Raff heads out every morning to pick up a cup of coffee from one of the various local cafes to support local businesses, admitting it has become more difficult during the current pandemic. To maintain his wardrobe, Raff regularly takes his suits to *Debonaires* on Glenferrie Road to be dry cleaned. He also buys his meat from *Glenferrie Gourmet Meats*, where “they do a fantastic job in looking after their customers when it comes to the prime cuts that they offer”.

“Glenferrie has a very vibrant set of shops,” said Raff. “There are so many good small businesses in the Glenferrie strip that need our support right now, and we should all really get around them.” Raff hopes the Glenferrie Festival will be able to return next year, seeing it as the “prime example” of how the Glenferrie community comes together and supports one another. “It’s such a positive and great way to celebrate how great the local community and the area is.”